

# Have you seen this bee?

## Giant Scrub Plasterer Bee (*Caupolicana floridana*)



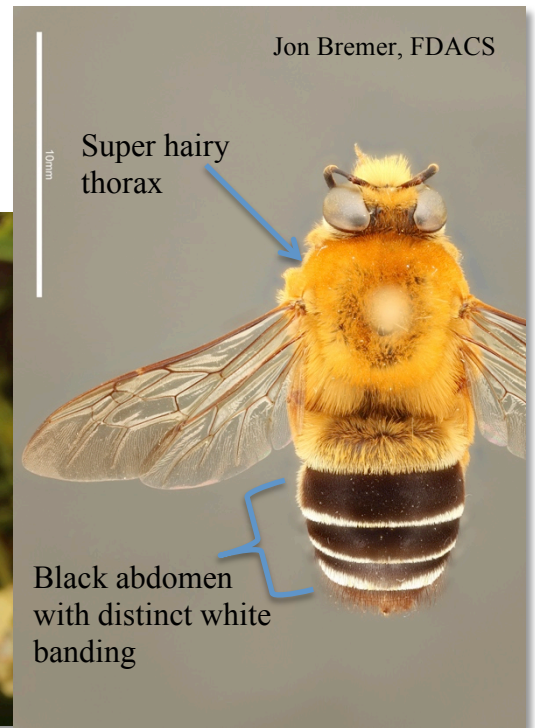
Clint Gibson, FLMNH



Scott Ward



← Actual size of the bee



Jon Bremer, FDACS

### If you see this bee:

- Photograph it!
- Note the time and location (GPS location preferred) where you observed it
- Take photos of the plant you saw it visiting
- Send this information to Chase Kimmel – [cbkimmel@ufl.edu](mailto:cbkimmel@ufl.edu)

Description: First described by Michener and Deyrup (2004), this bee is known to live in scrub habitat and is identified as a Species of Greatest Conservation Need by FWC. Historically, it has occurred in Highlands, Miami-Dade, and Orange Counties in Florida.

Activity: Sept – October between morning twilight – 10:00am & 3:30pm to sunset

Plant hosts: patridge pea (*Chamaecrista fasciculata*), Feay's prairieclover (*Dalea feayi*), scrub balm/Lloyd's mint (*Dicerandra frutescens*), piedmont blacksenna (*Seymeria pectinata*), and forked bluecurls (*Trichostema dichotum*).

Learn more about the bee: [Michener, C.D. and Deyrup, M., 2004. \*Caupolicana\* from Florida \(Hymenoptera: Colletidae\). \*Journal of the Kansas Entomological Society\*, 77\(4\), pp.774-782.](#)

This project is funded by The Florida Biodiversity Foundation – [floridabiodiversityfoundation.com](http://floridabiodiversityfoundation.com)



## Known to visit:



*Chamaecrista fasciculata*  
partridge pea

Photo by [wackybadger](#) – CC BY-SA 2.0



*Dalea feayi*  
Feay's prairieclover

Photo by [Mark T. Strong and Carol L. Kelloff](#) – CC0 1.0



*Dicerandra frutescens*  
scrub balm, Lloyd's mint

Photo by Chase Kimmel



*Seymeria pectinata*  
piedmont blacksenna

Photo by [Sharpj99](#) – CC BY-NC-SA 2.0



*Trichostema dichotomum*  
forked bluecurls

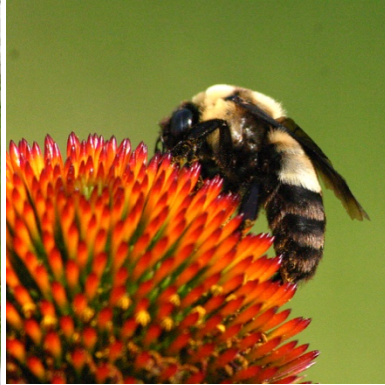
Photo by [bob in swamp](#) – CC BY 2.0

## Insects that look similar but are not the bee!



Bombyliid fly

Photo by Chase Kimmel



*Bombus fraternus*

Photo by [Pollinator \(talk\) \(Uploads\)](#) – CC BY-SA 3.0



*Bombus griseocollis*

Photo by [Run2Find](#) – CC BY-NC 2.0



*Bombus impatiens*

Photo by [bob in swamp](#) – CC BY 2.0



*Apis mellifera*

Photo by [Jim, the Photographer](#) – CC BY 2.0



*Svastra aegis*

Photo by [Carlton Astronomy and Entomology](#)



*Andrena fulvipennis*

Photo by [Sam Droege](#) – CC PDM 1.0



*Trachusa fontemvitae*

Photo by [John Ascher](#)