

# NOAA TRANSFORMATIONAL GRANT PROPOSAL

---

Restore a section of the Goulds Canal to reduce the distribution of contaminants into coastal waters and provide regional habitat/fisheries benefit throughout the "Canalshed"

## Overview- Creating a “Canalshed” Project for People and Planet

It's been demonstrated that land uses surrounding the Goulds Canal have been a source of pollution to Biscayne Bay. The primary concern is the landfill immediately adjacent to Goulds Canal. Miami-Dade County Regulatory and Economic Resources - Division of Environmental Resources Management (DERM) conducted a technical analysis of available data as well as completed a report which summarizes water quality sampling of both groundwater and surface waters to determine the source of contamination in the Goulds Canal. This report, entitled Groundwater and Surface Water Monitoring at the South Dade Landfill/ Goulds Canal in Miami-Dade County, concluded that ammonia and phosphorus from the adjacent landfill is leaching into the Goulds Canal, which connects with through various other canals that, discharge into Biscayne Bay and Biscayne National Park.



# Biscayne Bay Report Card 2023

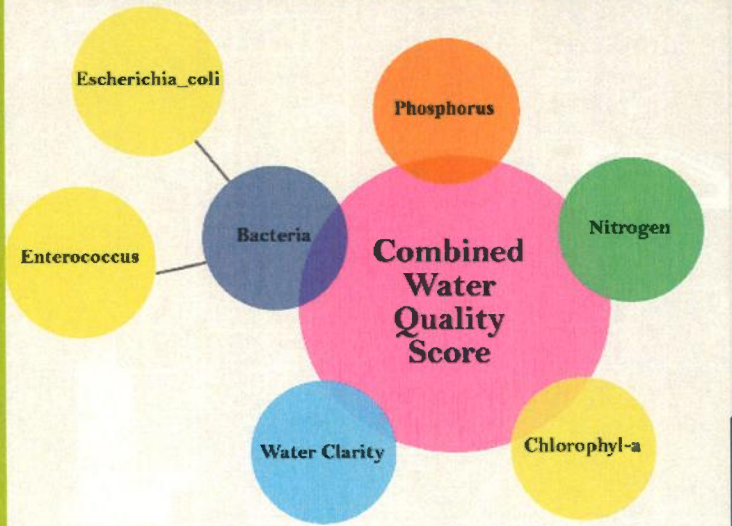
Overview

Monitoring Stations

Biscayne Bay Report Card 2023

Restoring Biscayne Bay

Combined Water Quality



Six water quality parameters are evaluated as part of the Combined Water Quality Score.

## Combined Water Quality

-  Fair
-  Poor

## Combined Water Quality Tributaries



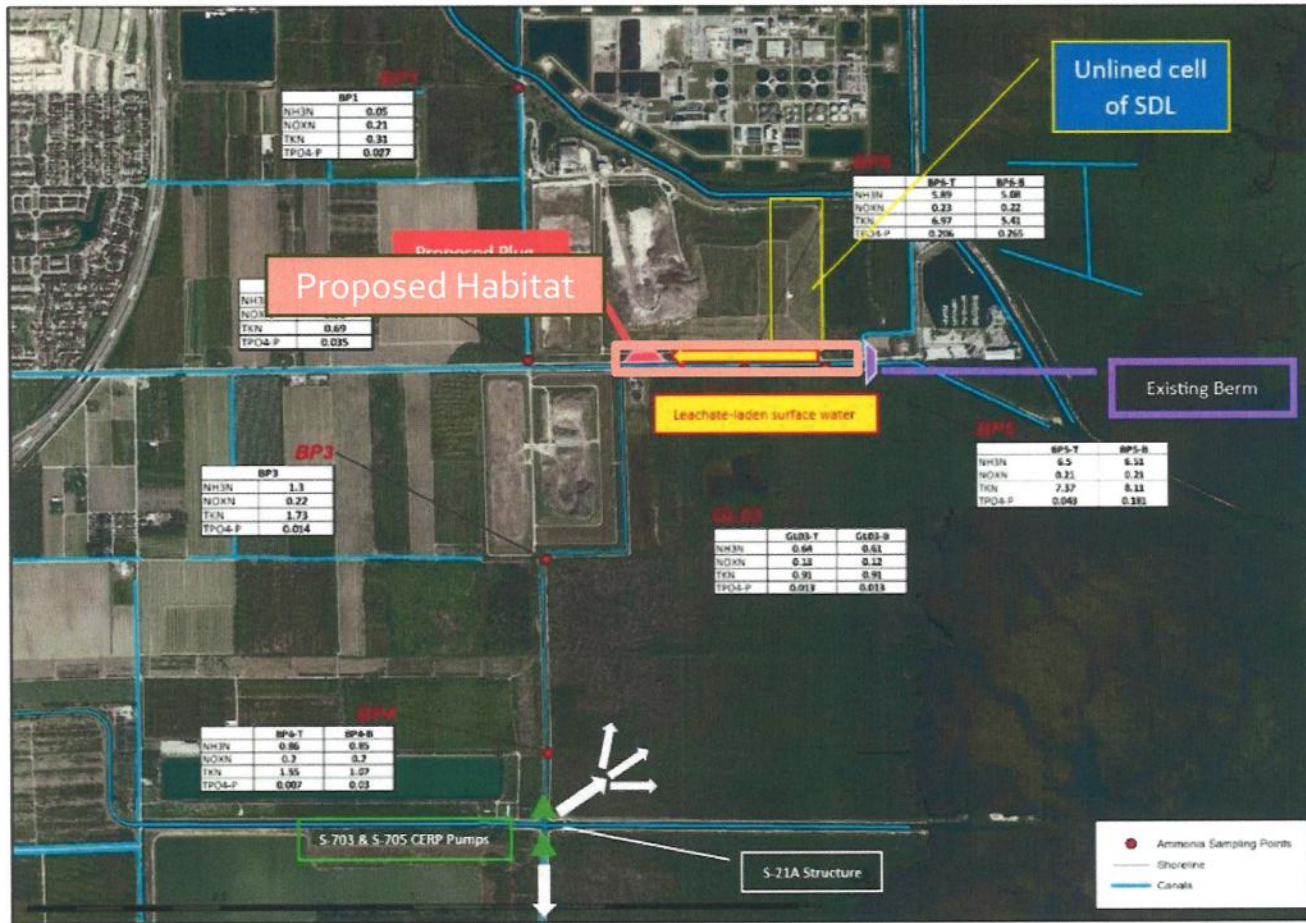
# WHAT'S THE PROBLEM?

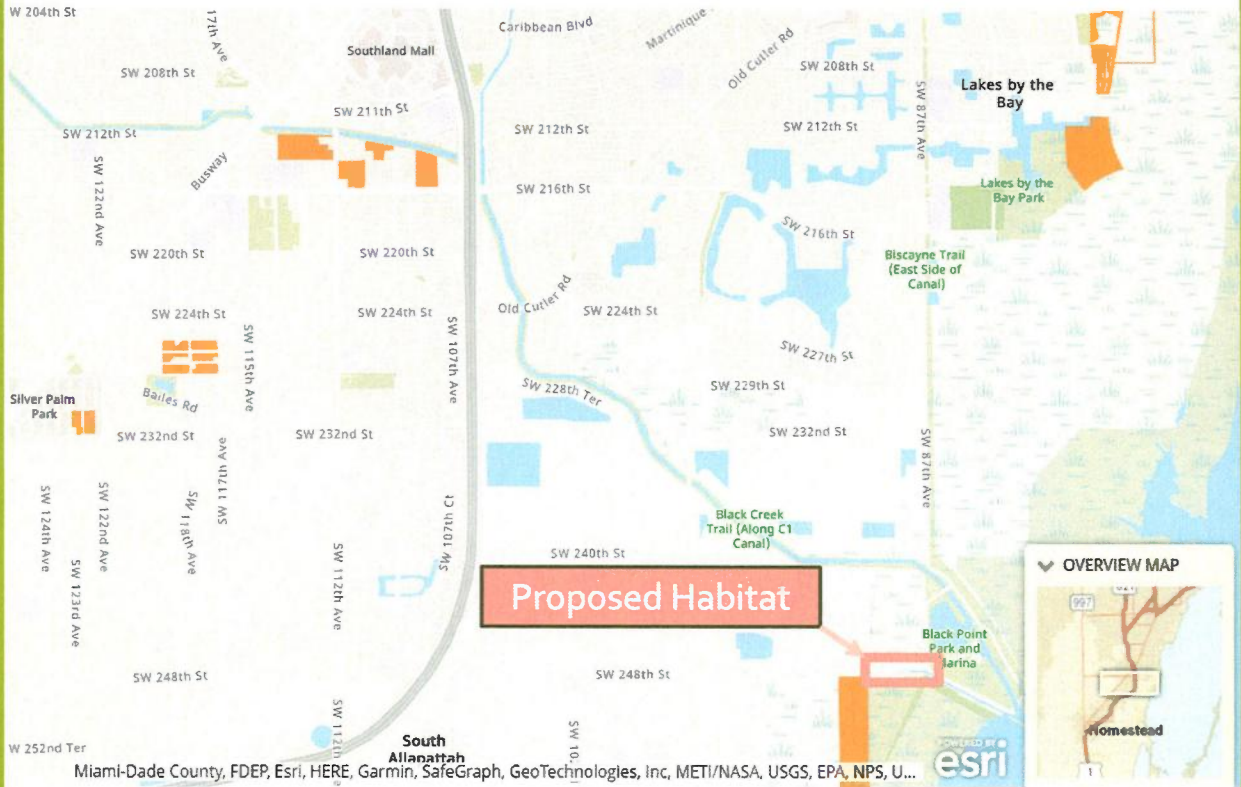
# Project Components

- Administrative staff - 1 position (over 5 years)
- Filling in the tidal and non-tidal portions of the Goulds canal to create freshwater and mangrove wetlands
- Land Acquisition upstream to prevent further amount of pavement and stress to the Goulds Canal (increase ecosystem services)
- Habitat management in the canal basin- urban and coastal forests
- Improved Water Quality delivered into Biscayne Bay by CERP pumps through coastal wetlands
- Improvements to Fisheries in the canal and in the near shore through CERP



# Center of the Project





# CONTEXT OF PROJECT



# Stakeholder Input Messaging

- Improvements to Biscayne Bay assists in maintaining a regional economic powerhouse and high performing estuary
- The lands around Goulds Canal (Goulds and Naranja) have been identified as priorities for urban forestry and are areas in need of environmental services
- Connect land to water and the environmental services

# Next Steps

- Letter of commitment vs letter of support: Commit to an action or support the initiative through advocacy
- Additional support for different components
- Project identification- What role do groups sense need to be in place to integrate the project into the community?
- Template will be sent out but we much rather stakeholders discuss from their perspective